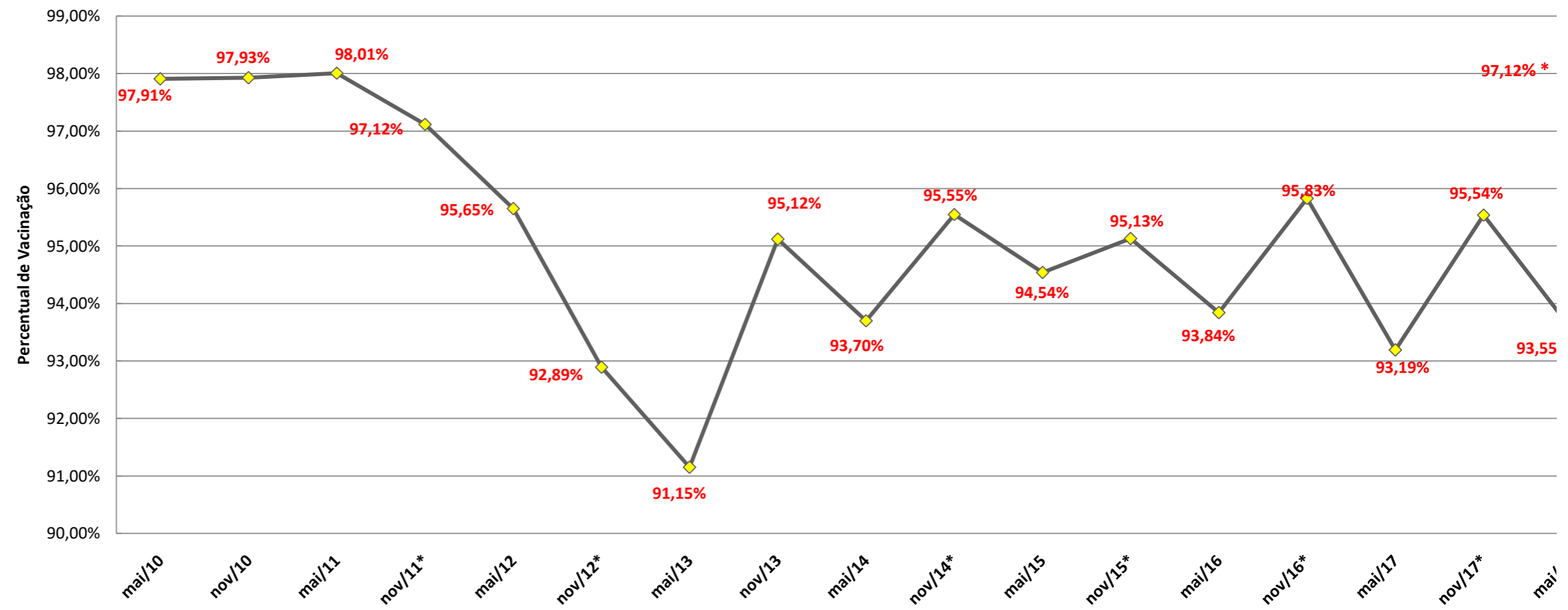




Evolução da Cobertura Vacinal contra Febre Aftosa na Bahia Período: 2001 a 2022.1

set/01	91,57%
mar/02	92,04%
set/02	92,80%
mar/03	93,40%
set/03	93,43%
mar/04	92,74%
set/04	93,49%
mar/05	94,17%
set/05	95,60%
mar/06	94,83%
set/06	95,84%
mar/07	96,59%
set/07	96,54%
mar/08	96,38%
nov/08	95,87%
mai/09	96,46%
nov/09	97,04%
mai/10	97,91%
nov/10	97,93%
mai/11	98,01%
nov/11*	97,12%
mai/12	95,65%
nov/12*	92,89%
mai/13	91,15%
nov/13	95,12%
mai/14	93,70%
nov/14*	95,55%
mai/15	94,54%
nov/15*	95,13%
mai/16	93,84%
nov/16*	95,83%
mai/17	93,19%
nov/17*	95,54%
mai/18	93,55%
nov/18*	93,49%
mai/19	93,80%
nov/19	95,87%
mai/20	93,65%
nov/20*	93,99%
mai/21	93,36%
nov/21*	91,72%



* Percentual referente ao Rebanho até 24 meses

Fonte: Defesa Sanitária Animal

mai/22 94,70%

Atualizado 24/08/2022 por Quézia Santos

